

SERIES LG

USER'S MANUAL

All Steam Iron

Instruction & Exploded View



SHOULD USE OUR PRODUCT AFTER READING INSTRUCTION



ROTONDI[®] group

A step ahead

LG STEAM IRON

CONNECTING HOSE

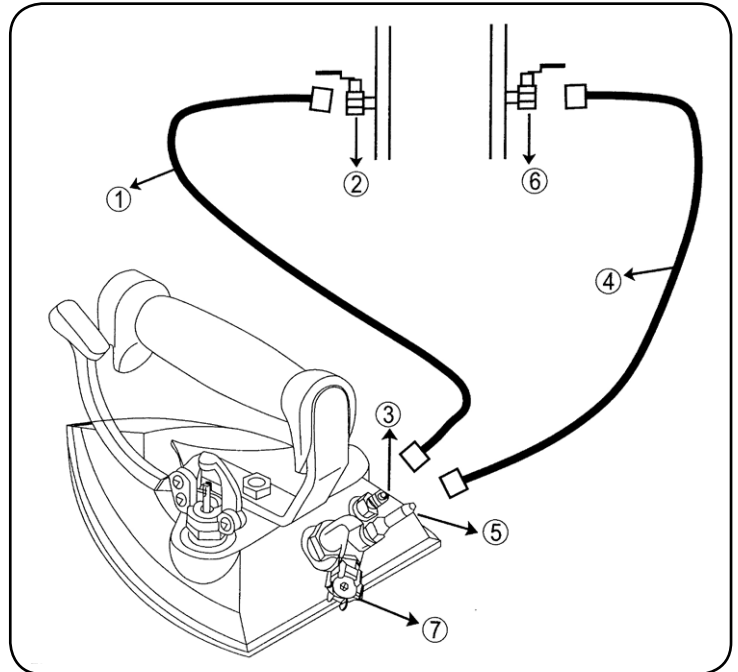
1_ MAXIMUM STEAM PRESSURE: 8 BAR

2_ CONNECTING STEAM HOSE

- 1) Connect steam hose (1) to either steam outlet pipe (2) or the steam nipple of boiler.
- 2) Connect the other end of steam hose (1) to intake nipple of iron (3).

3_ CONNECTING DRAIN HOSE

- 1) If return (drain pipe) is available, connect steam hose to the nipple of return pipe.
- 2) Connect the end of steam hose connected to return pipe to the nipple of outlet valve (5).
- 3) If return pipe is not available, connect drain hose to the nipple of outlet valve. Then, either place the other end of hose outside of workshop or connect it to condense water tank.



USE INSTRUCTION

- 1_ Turn on power switch of boiler and wait until the pressure of boiler reaches at 3-5 BAR. Then turn outlet valve knob counterclockwise and heat iron with the steam from boiler for 10 min. and press steam lever to start using.
- 2_ If outlet valve (7) too tightens, water can leak out of the iron. Loosen outlet valve properly for efficient ironing.

SAFETY INSTRUCTION

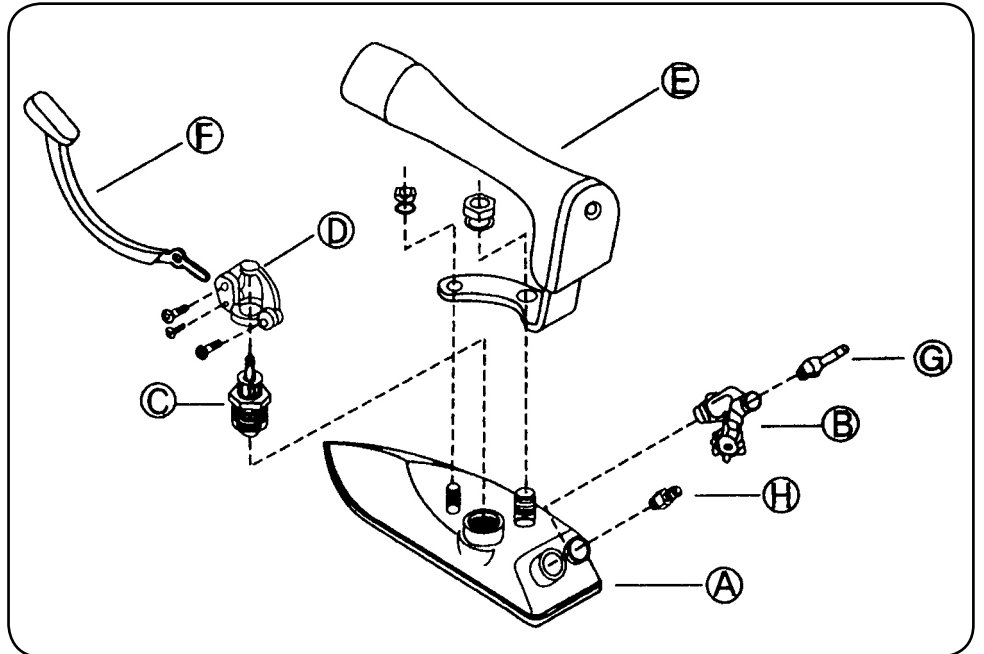
- 1_ Read all instruction of this manual before using iron.
- 2_ If the appliance shows any defect, stop using it and contact Service Centre for repair or the store where you purchased.
- 3_ When changing steam hose, close the pressure of boiler and remove the pressure inside of iron, then change the steam hose.
- 4_ While using, keep any parts of body away the soleplate of iron. Burns can occur from touching hot metal parts.
- 5_ While using, do not jet steam toward any parts of body. Burns can occur from touching hot water, or steam.
- 6_ Keep the iron away from children and do not allow them to operate it.
- 7_ Contact an authorized service facility only for repair and information on examination.
- 8_ Damage from misuse, abuse or neglect are not covered by warranty. Also, warranty becomes void if repairs are undertaken by unauthorized persons.

TROUBLE SHOOTING

PROBLEM	CAUSE	SOLUTION
Steam keeps coming out of steam hole.	Replace valve switch pin. Valve pin spring abrasion.	Replace valve switch pin. Replace valve pin spring.
Steam comes out of outlet valve.	Outlet valve fastening nut loosened. Valve Teflon ring abrasion.	Tighten the fastening nut fully. Replace Teflon ring.
Steam comes out of steam valve.	Teflon ring abrasion. Spring abraded or loosened.	Replace Teflon ring. Teplace valve pin spring.
Water comes out of steam hole.	Outlet valve too tightens.	Let water iside of iron come out by opening outlet valve

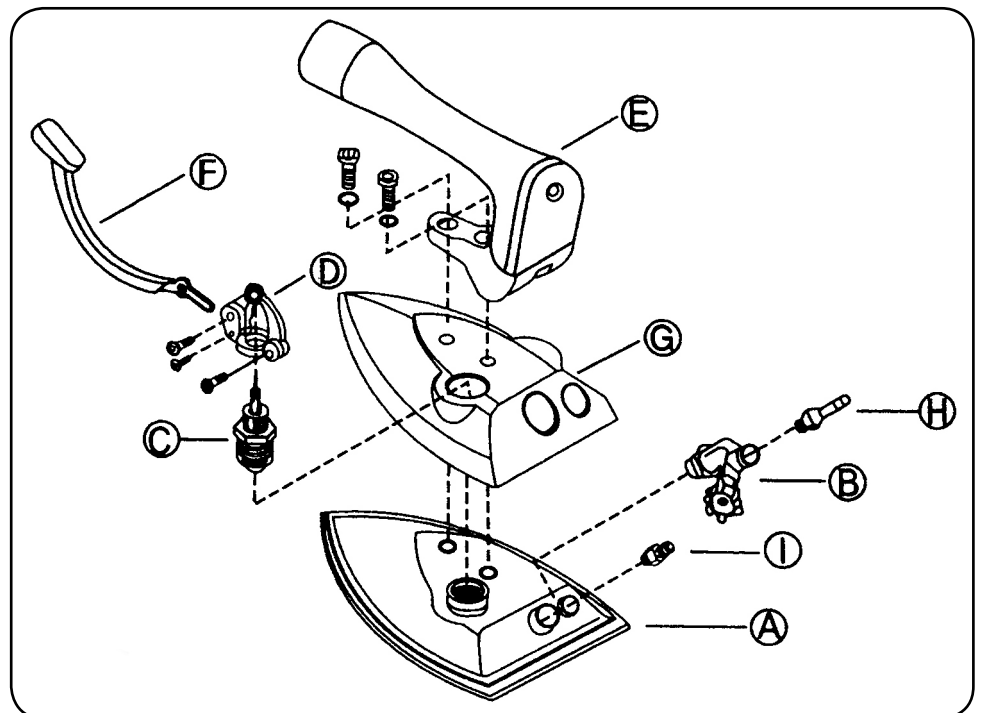
LG 200

NO.	DESCRIPTION
A	Base
B	Exit valve set
C	Steam valve set
D	Valve band set
E	Handle set
F	Valve lever
G	Nipple (A)
H	Nipple (C)

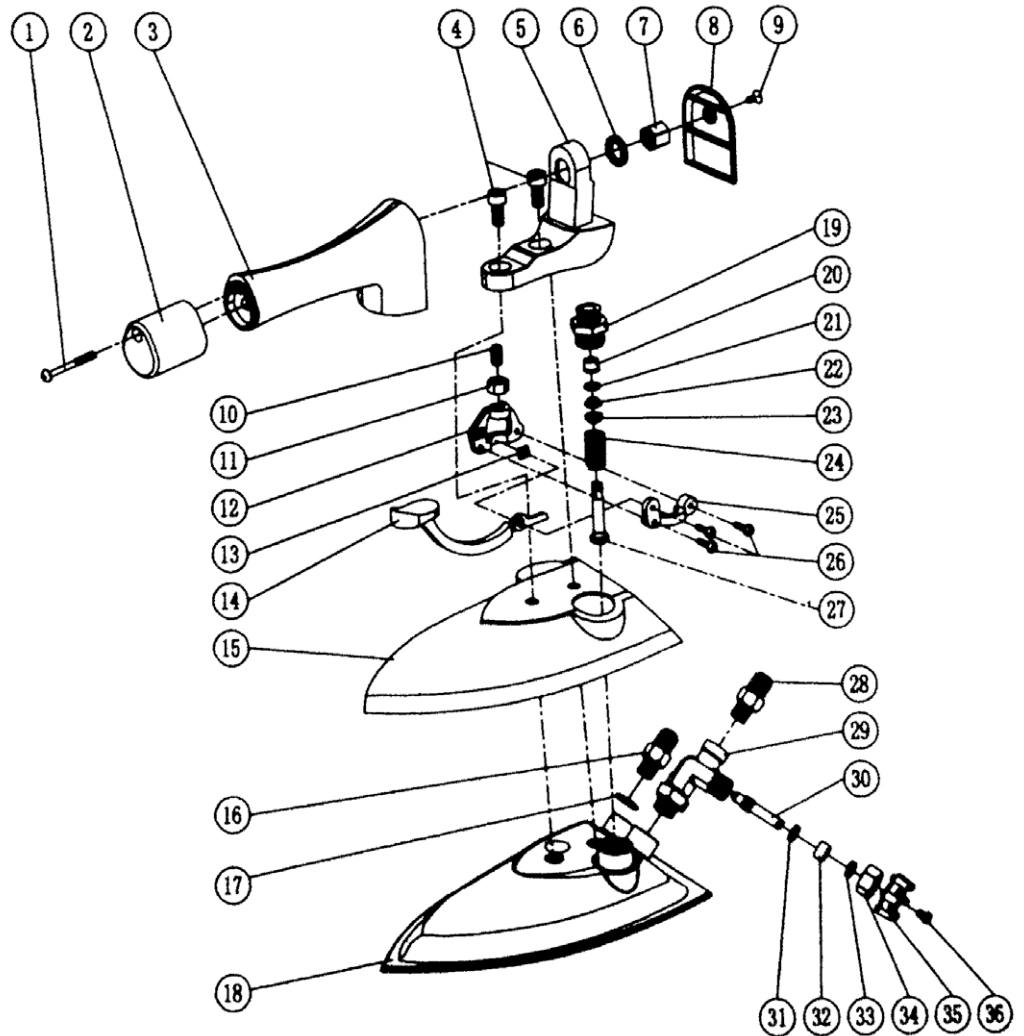


LG 300

NO.	DESCRIPTION
A	Base
B	Exit valve set
C	Steam valve set
D	Valve band set
E	Handle set
F	Valve lever
G	Cover
H	Nipple (A)
I	Nipple (C)



NO.	DESCRIPTION
1	M4X34 screw
2	Front cover
3	Handle
4	M6X14 hex screw
5	Handle support
6	Washer
7	Nut cap
8	Back cover
9	M4X6 screw
10	M6X11 tightening screw
11	M6 nut cap
12	Support (big)
13	Square washer
14	Push switch
15	Plastic shell
16	Nipple
17	Washer
18	Iron body
19	Valve body
20	Teflon
21	o-ring
22	Teflon
23	Copper-washer
24	Spring
25	Support (small)
26	M3X12 screw
27	Steam valve
28	Nipple
29	Components of drain valve
30	Core
31	Copper-washer
32	Teflon
33	Copper-washer
34	Copper nut cap
35	Knob
36	M4X4 screw



ROTONDI group srl

Via F.lli Rosselli, 14/16 20019 Settimo Milanese (Milano) - Italy
 Tel. +39 02 33501224 - Fax +39 02 33501329
 www.rotondigroup.com - rotondi@rotondigroup.it



ROTONDI® group

A step ahead